



SINK SPECIFICATIONS

SILGRANIT®

BLANCO PRECIS™ SINGLE 27 Undermount
Model 522430

FEATURED MODEL

522430 Single, 8-5/8" bowl depth, BISCUIT

ADDITIONAL MODELS

522259 Single, 8-5/8" bowl depth, ANTHRACITE

522427 Single, 8-5/8" bowl depth, CINDER

522433 Single, 8-5/8" bowl depth, CAFE BROWN

522428 Single, 8-5/8" bowl depth, METALLIC GRAY

522432 Single, 8-5/8" bowl depth, TRUFFLE

522429 Single, 8-5/8" bowl depth, WHITE

522431 Single, 8-5/8" bowl depth, BISCOTTI

FEATURES

- Required outside cabinet: 30"
- 80% solid granite
- Heat resistant up to 536°F
- Unsurpassed cleanability backed by industry leading 7 patents!
- Resistant to scratches, stains and all household acids and alkali solutions
- Template provided with approximate 1/8" reveal
- Undermount clips provided
- Limited lifetime warranty

OPTIONAL ACCESSORIES

Sink Grid: 234059

CODE/STANDARDS COMPLIANCE

ANSI Z124.6-97

IAPMO/UPC listed

WARRANTY

BLANCO'S SILGRANIT II Series sinks feature a LIMITED LIFETIME WARRANTY to be free of all manufacturing defects under normal use. See our complete warranty for details.

While BLANCO endeavors to provide accurate information, all dimensions are nominal, cannot be guaranteed, and are subject to change or cancellation. BLANCO assumes no responsibility for use of superseded or voided specifications.

JOB INFORMATION

Job Name: _____

Contact: _____

Date Specified: _____

Specifier: _____

Contractor: _____

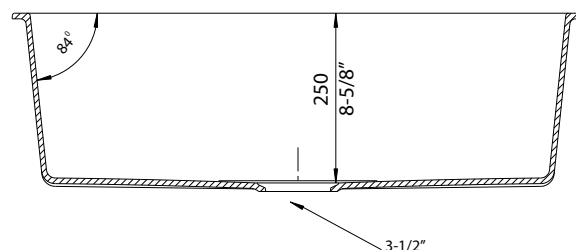
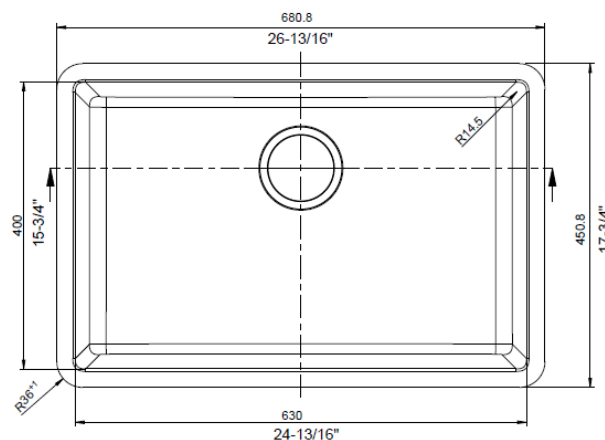


Model 522433 shown

NOMINAL DIMENSIONS

OVERALL	CUTOUT SIZE	BOWL DEPTH	DRAIN DIAMETER
26-13/16"X17-3/4"	Template provided with approximate 1/8" reveal	8-5/8"	3-1/2"

DXF cutout templates available on our website.



BLANCO AMERICA

800.451.5782

www.blancoamerica.com

© 2017 BLANCO AMERICA

1/17

SPEC-001